

HOW TO READ CODE

SC - TUN - 18 - SS304 - PO

1

2

3

4

1

Type	
TUN	Threaded Union
SWUN	Socket Weld Union

2

Thread	
18	1/8" NPT
14	1/4" NPT
38	3/8" NPT
12	1/2" NPT
34	3/4" NPT
01	1" NPT

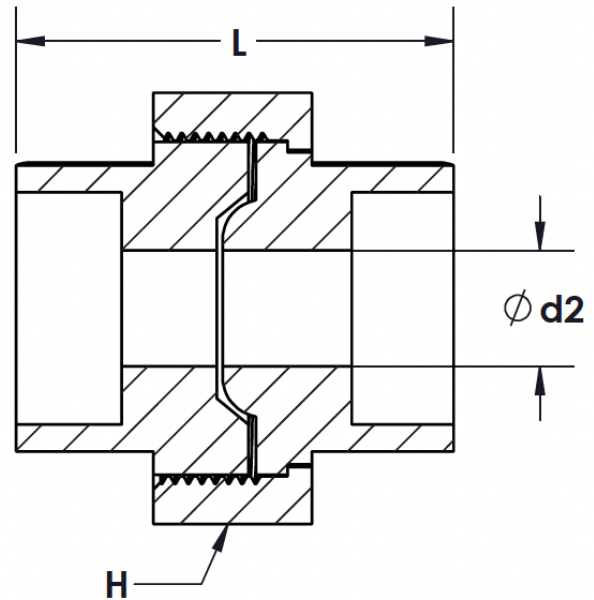
3

Material	
SS304	SS 304
SS316	SS 316
SS321	SS 321
BR	Brass
CS	Carbon Steel
IN	Inconel
MO	Monel
CO	Copper
TI	Titanium
HAS	Hastelloy
STL	Stellite
AL	Aluminium

4

Finish	
PO	Polish
NP	Nickel Plated
ZP	Zinc Plated

THREADED UNION



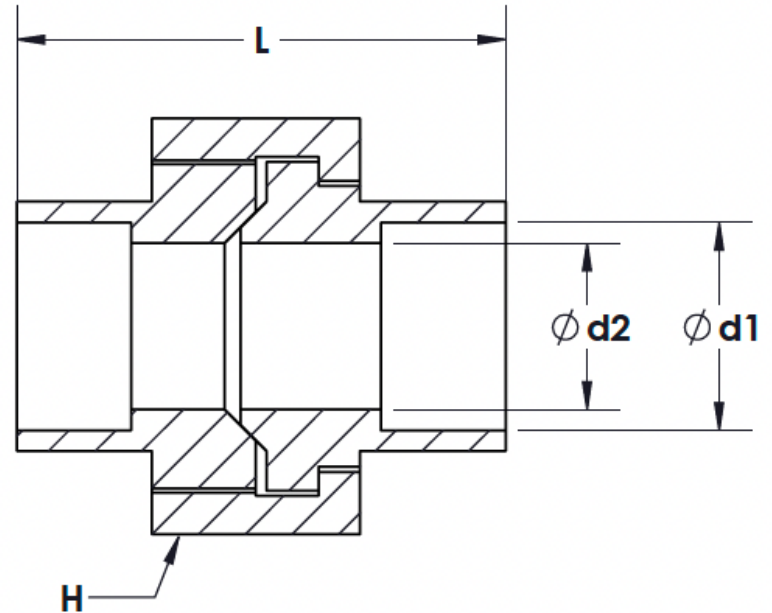
Part No.	Thread	Length (L) in.	Hex (H) in.	Min. Bore (D2) in.
SC.TUN.18.XX.XX	1/8" NPT	1.44	1.14	0.25
SC.TUN.14.XX.XX	1/4" NPT	1.44	1.14	0.37
SC.TUN.38.XX.XX	3/8" NPT	1.48	1.42	0.53
SC.TUN.12.XX.XX	1/2" NPT	1.63	1.61	0.67
SC.TUN.34.XX.XX	3/4" NPT	1.85	1.93	0.84
SC.TUN.01.XX.XX	1" NPT	1.97	2.28	1.09

Materials Available: SS 304, SS 316, Brass, Carbon Steel

Finishes Available: Polish, Nickel Plated

For trade inquiries click here!

SOCKET WELD UNION



Part No.	Thread	Length (L) in.	Hex (H) in.	Min. Bore (D2) in.	D1 in.
SC.SWUN.18.XX.XX	1/8" NPT	1.44	1.14	0.25	0.42
SC.SWUN.14.XX.XX	1/4" NPT	1.44	1.14	0.37	0.56
SC.SWUN.38.XX.XX	3/8" NPT	1.48	1.42	0.53	0.69
SC.SWUN.12.XX.XX	1/2" NPT	1.63	1.61	0.67	0.85
SC.SWUN.34.XX.XX	3/4" NPT	1.85	1.93	0.84	1.06
SC.SWUN.01.XX.XX	1" NPT	1.97	2.28	1.09	1.33

Materials Available: SS 304, SS 316, Brass, Carbon Steel

Finishes Available: Polish, Nickel Plated

For trade inquiries click here!